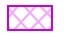







**LENDA**




**TECOR**

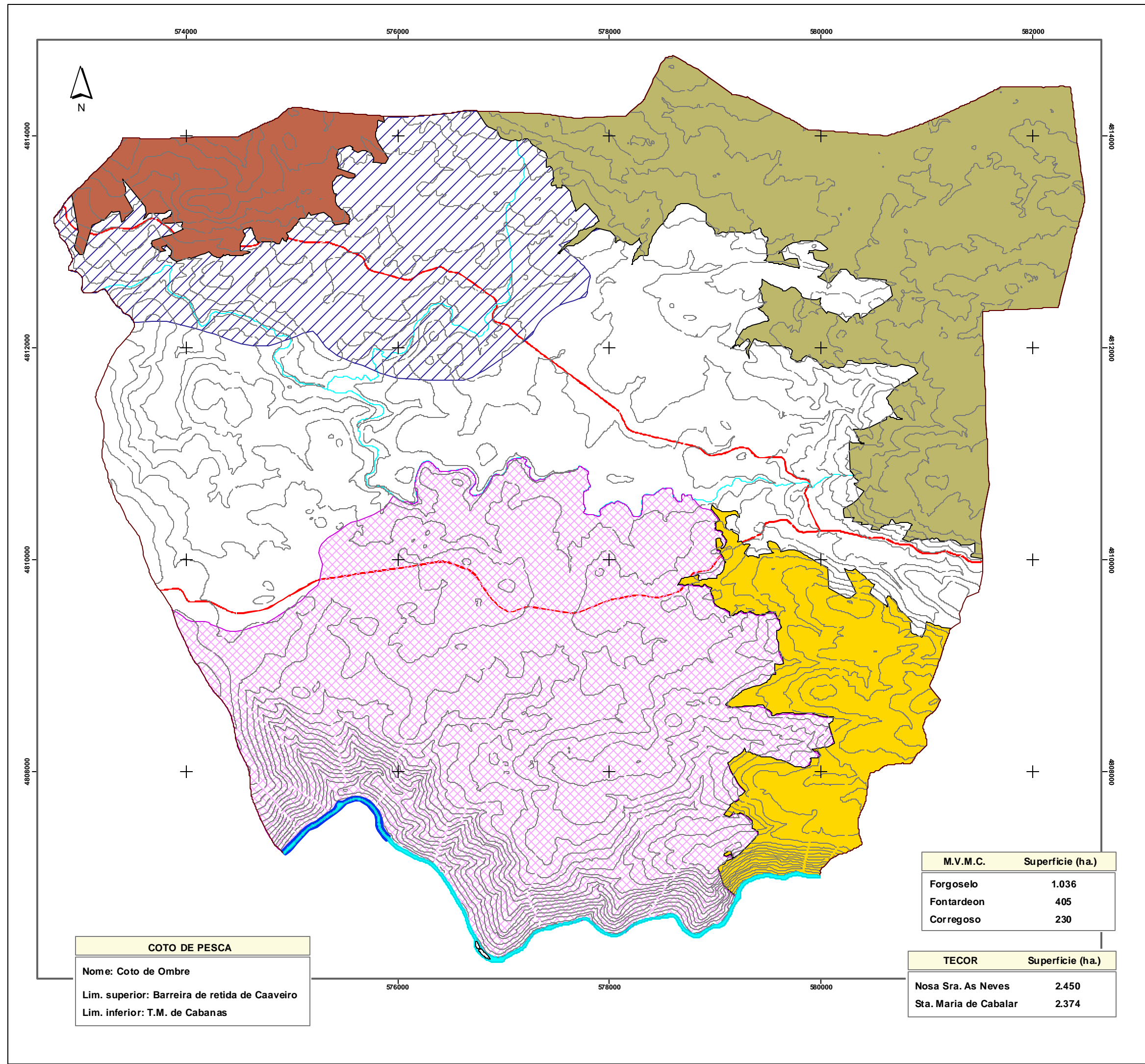
-  Nosa Sra. de As Neves
-  Sta. María de Cabalar

 Coto de pesca de Ombre

**M.V.M.C.**

-  Corregoso
-  Fontardeon
-  Forgoselo

-  Rede viaria principal
-  Curvas de nivel (Maestras, intervalo 25 m.)
-  Rede hidrográfica principal



**COTO DE PESCA**

Nome: Coto de Ombre  
 Lim. superior: Barreira de retida de Caaveiro  
 Lim. inferior: T.M. de Cabanas

M.V.M.C.	Superficie (ha.)
Forgoselo	1.036
Fontardeon	405
Corregoso	230

TECOR	Superficie (ha.)
Nosa Sra. As Neves	2.450
Sta. Maria de Cabalar	2.374

PLANO DE INFORMACIÓN		
TITULO	TECORes COTOS DE PESCA M.V.M.C.	Nº PLANO : <b>14</b>
ESCALA	<b>1:35000</b>	
REDACTOR	Antonio de Vega Rodríguez - Arquitecto	